

Speed Matters



ACCELERATE 
COLLECTION

Accelerate[®] Press Room Gripper

destaco.com



A DOVER COMPANY



THE BEST PRODUCTS. UNMATCHED SERVICE. WORLDWIDE.

With a support network spanning the globe, DE-STA-CO offers consistent, comprehensive service to any location in the world. Whether your operations are localized or span multiple continents, you will always have access to the highest levels of customer service and technical support.

Since our founding in 1915, DE-STA-CO continues to provide innovative workholding and automation solutions. We are honored to work alongside our global customers to achieve our key mission, which encompasses:

- Providing world-class service and operational excellence
- Increasing customer productivity through customized solutions
- Developing products to meet unique application needs
- Consistency in our on-time delivery promise
- Ensuring top value throughout our product catalog

DE-STA-CO provides productivity solutions to a diverse range of market segments

- Aerospace
- Automotive/transportation
- Consumer products
- Food and packaging
- Plastic injection molding
- Medical
- Defense

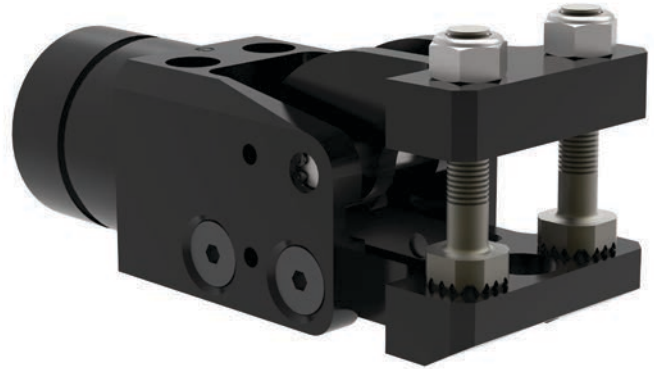


Accelerate® Press Room Gripper



DE-STA-CO innovates press room sheet metal stamping solutions with lightweight tools to produce more stamped parts per hour.

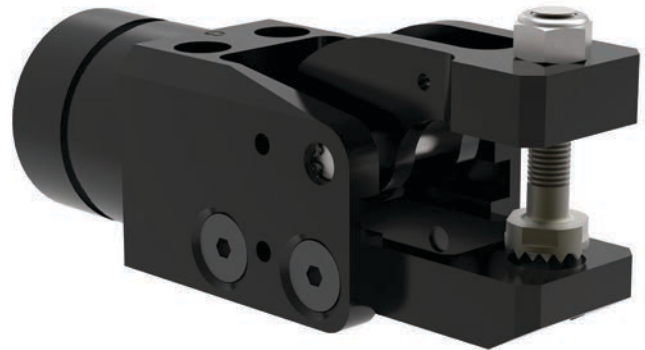
- 60% lighter** (0.27kg vs 0.56kg)
- 12% smaller** foot print
- 60% faster** actuation (33ms vs 50ms)
- 100% DE-STA-CO** innovation



Double Tip
Lower Fixed Jaw

Innovative Features

- Compact and powerful - grip force (up to 1000N at 5 bar)
- No protrusion of top jaw below body on fixed bottom jaw version
- Integrated Clamp-Loss Protection
- One-step tip adjustment with optional tool



Single Tip
Lower Fixed Jaw



75° Jaw Opening

30° Jaw Opening

Zero Protrusion Fixed Jaw

Patent Pending

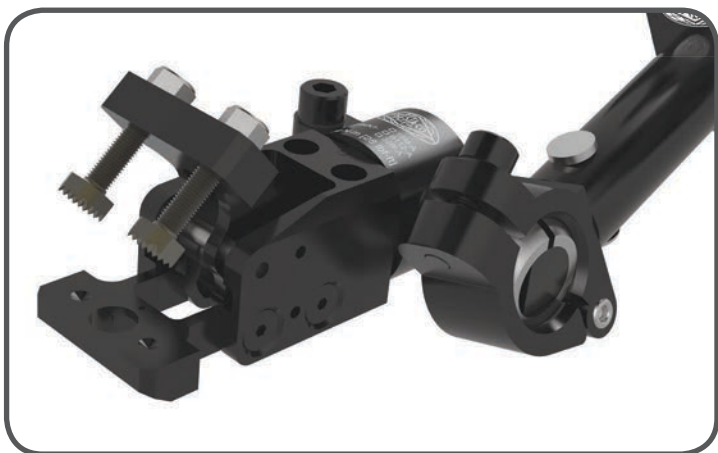
Accelerate® Collection Lightweight Solutions

The Accelerate® Press Room Gripper is designed to compliment the Accelerate® Collection, providing a complete lightweight and flexible tooling system.



ACCELERATE 
COLLECTION

The Accelerate® Collection can handle parts of any size and shape throughout the stamping process.

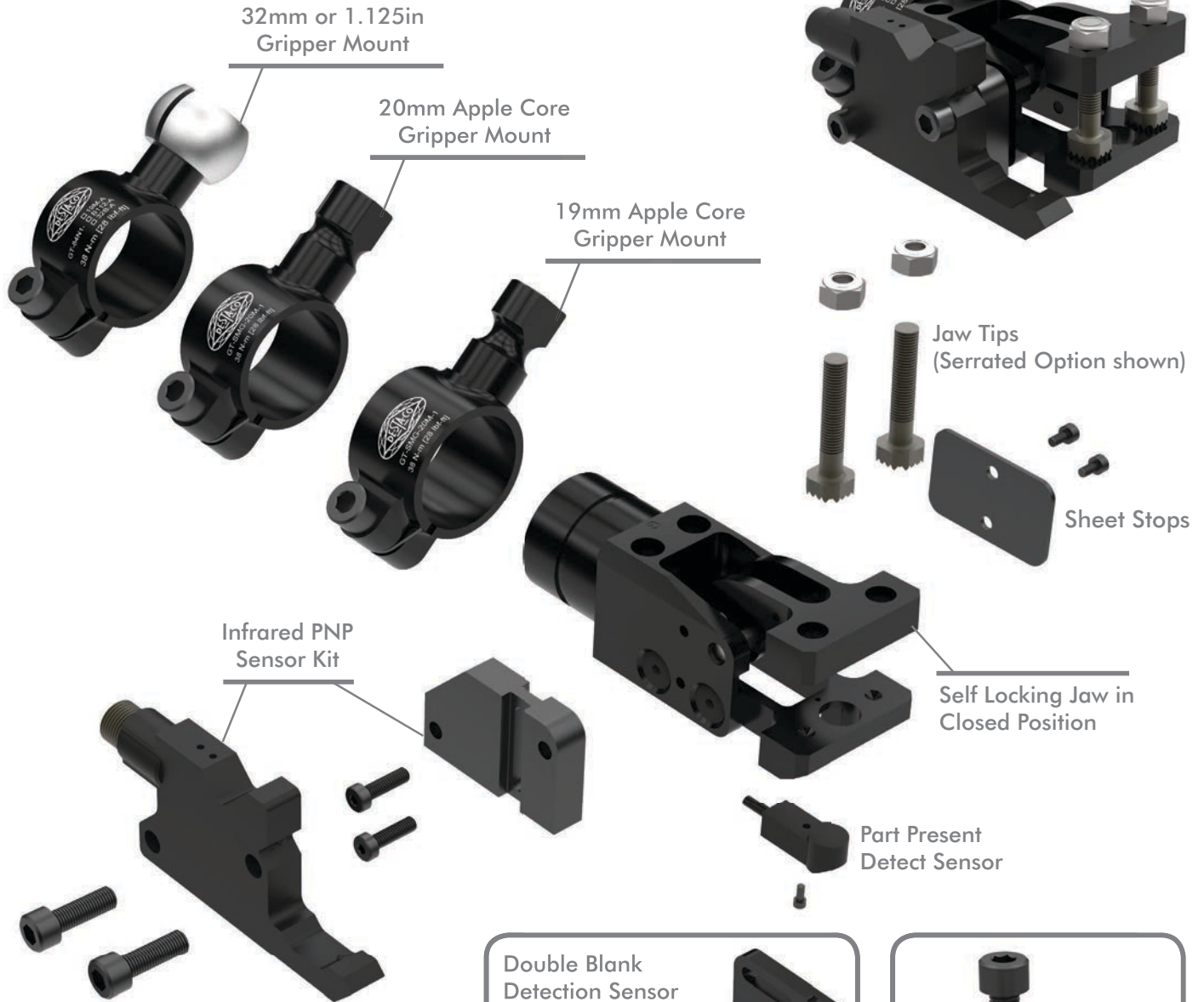


This sheet metal gripper is half the weight, smaller and faster than our closest competition without sacrificing grip force (up to 1000N at 5 bar)

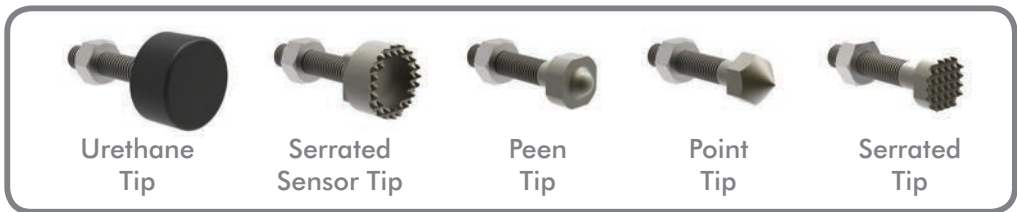
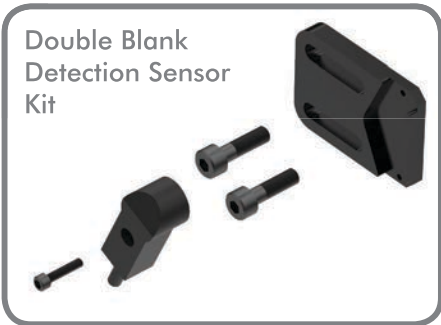


Accelerate® Press Room Gripper

Series 84N1 Easy Integration - Speed Matters



Serrated tip option is used with double tip jaw style. Single tip jaw style requires Serrated Sensor Tip.





Series 84N1 Ordering Information

84N1 - **N** - **030** - **F** **A** **02** - **1** - **P** - **1** **0**

Base Model

Ports

Ports	Description
N	NPT
G	BSP
T	BSPT

Jaw Configuration

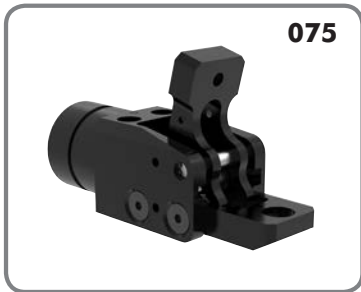
Jaw Configuration	Description
F	Fixed Bottom Jaw

Opening Angle

Opening Angle	Description
030	30° Opening Angle
075	75° Opening Angle
XXX	Customer specified opening angle in 5° increments to a maximum of 75°

Jaw Style and Tip Mount

Jaw Style and Tip Mount	Description
A	Single Tip Threaded
C	Double Tip Threaded



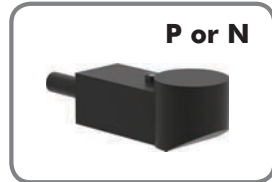


Series 84N1 Ordering Information

Part Presence Detection

- 0
- P
- N

Description
None
PNP
NPN



4mm Sensing Range

Sheet Stops

- 0
- 1

Description
None
Included



Left Sensor Side Mount

- 0
- 1
- 2
- 3

Description
None
Double Blank PNP Sensing
Double Blank NPN Sensing
Infrared PNP Sensing

Right Sensor Side Mount

- 0
- 1
- 2
- 3

Description
None
Double Blank PNP Sensing
Double Blank NPN Sensing
Infrared PNP Sensing

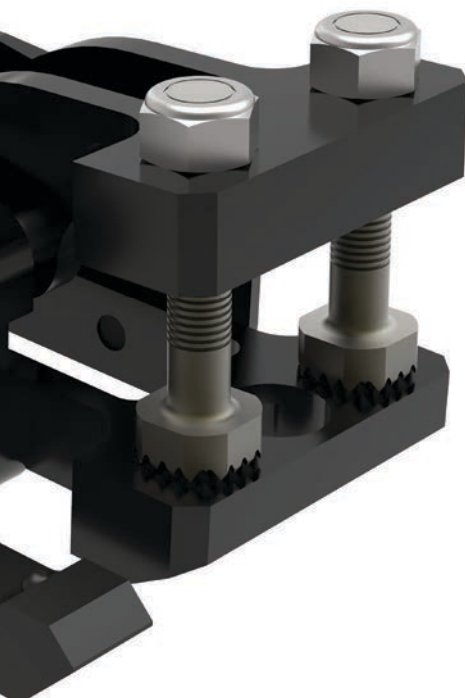
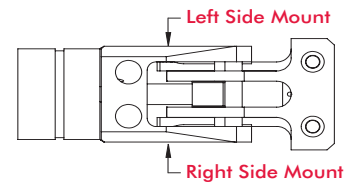


0.4 mm Double blank minimum per sheet thickness

Tips

- 00
- 01
- 02
- 03
- 04
- 05

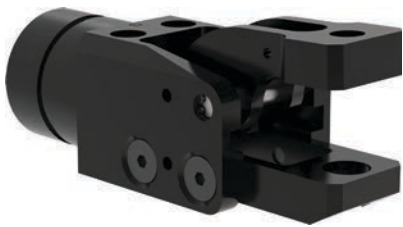
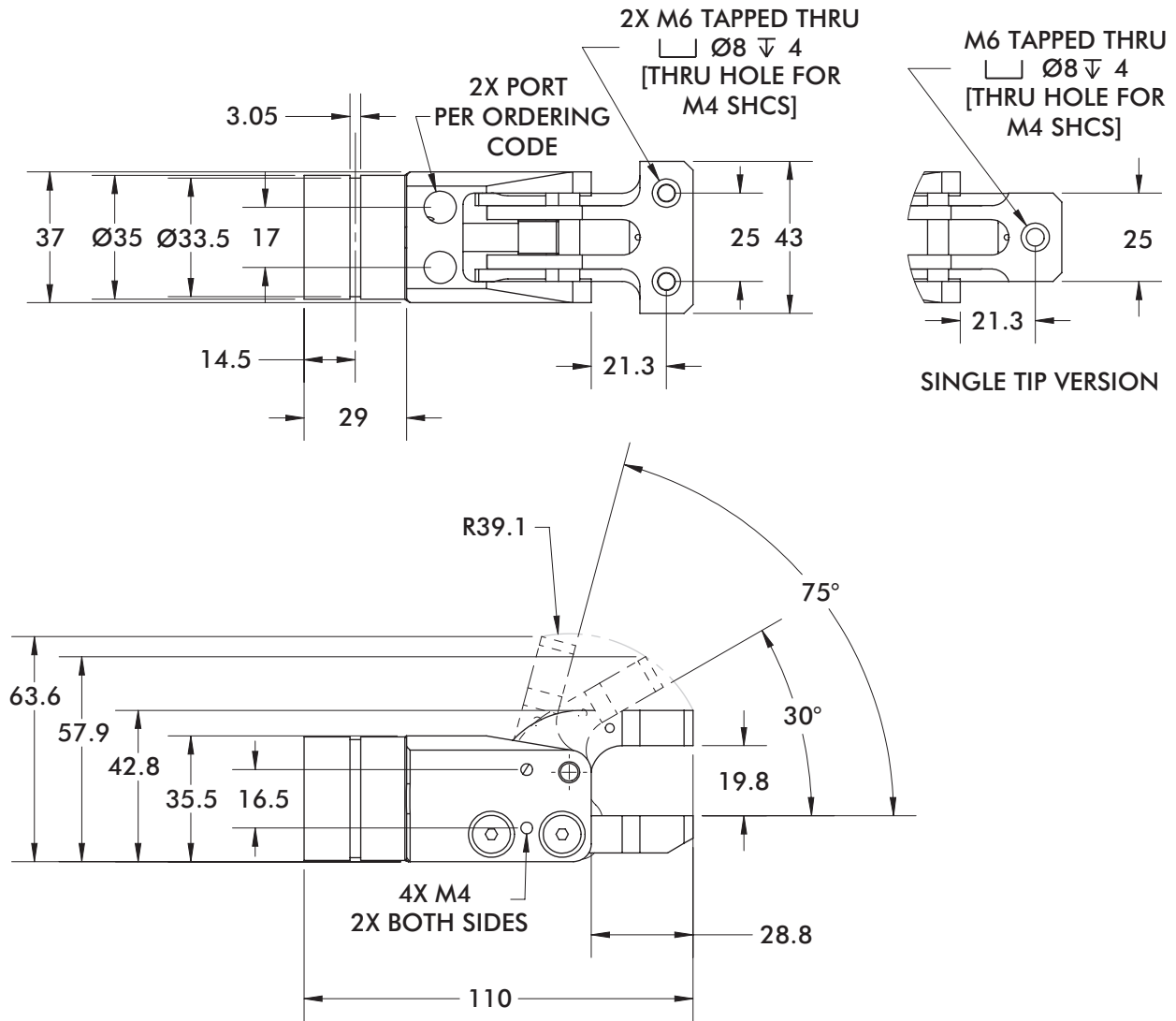
Description
None
Serrated for double tip jaw style
Serrated for use with part present sensor single tip jaw style
Point Tip
Peen Tip
Polyurethane Tip (Durometer 70A)



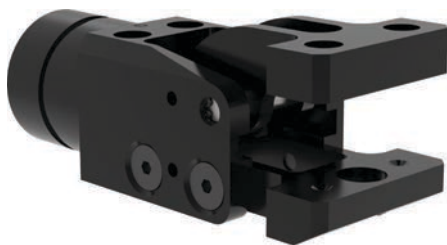
Description	Part Number	Single Tip Jaw	Double Tip Jaw
Polyurethane Tip	8JD-1005-1	Yes	Yes
90 Degree Point Tip	8JD-1001-1	Yes*	Yes
Serrated Tip	8JD-1002-1	Yes*	Yes
Peen Tip	8JD-1003-1	Yes*	Yes
Serrated Notched Top (for Jaw Style "A")	8JD-1004-1	Yes	No

*These options will work on single tip jaws but WILL activate the part present sensor which will result in a false positive if that option is used.

Series 84N1 Specifications and Dimensions



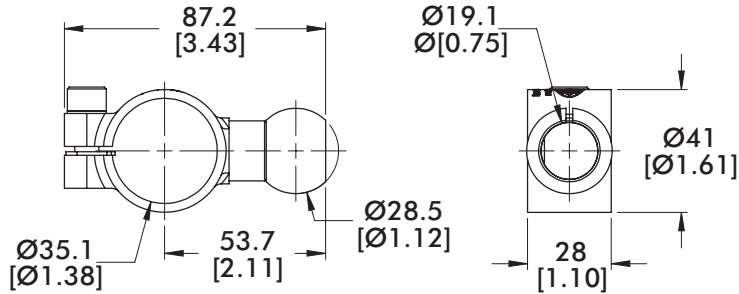
Single Tip



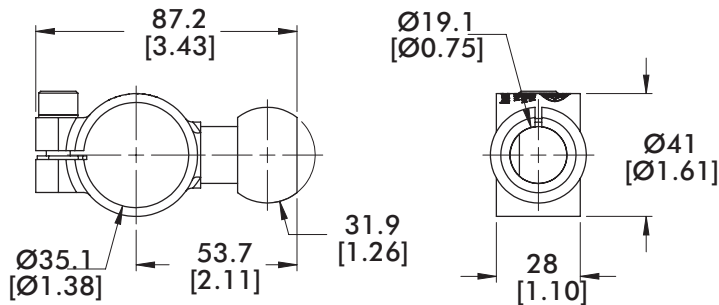
Double Tip

Specification	Unit	
Grip Force at 5 bar	N	Up to 1000
Weight (FC00 version)	Kg	.27
Size L x W x H (closed)	mm	110 x 43 x 43
Size L x W x H (open)	mm	110 x 43 x 64
Actuation Time	ms	33
Life	cycles	5 million
Minimum Operating Pressure	bar	1
Opening Angles (others available upon request)		30°, 75°
Piston Ø	mm	25
Air Consumption/Cycle	L	.015

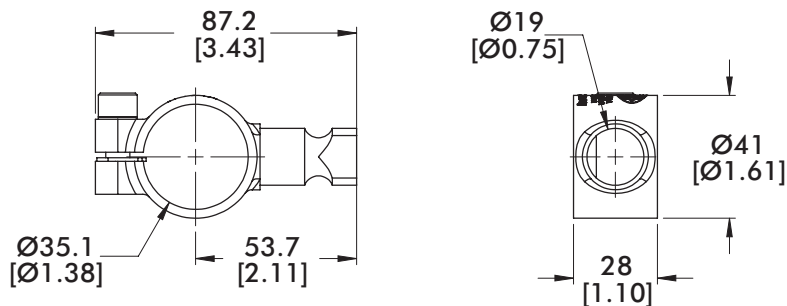
Series 84N1 Mounts



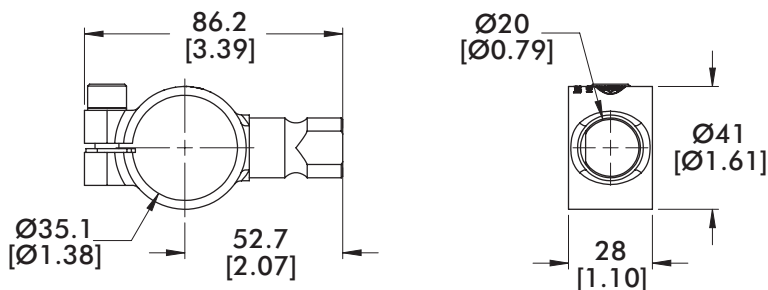
GT-84N1-B112-A



GT-84N1-32B-A



GT-84N1-19M-A



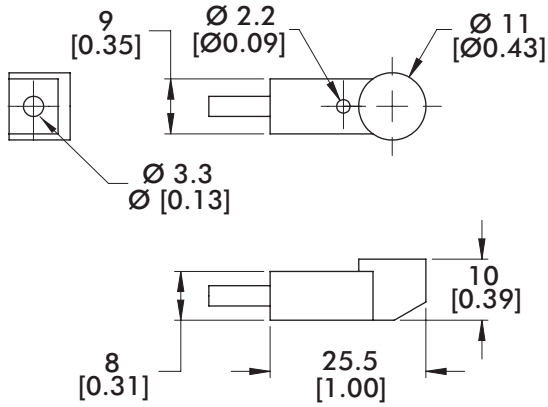
GT-84N1-20M-A



Mount Accessories	Part Number
Gripper 1.125in (28.5mm) Ball Mount	GT-84N1-B112-A
Gripper 32mm Ball Mount	GT-84N1-32B-A
Gripper 19mm Applecore Mount	GT-84N1-19M-A
Gripper 20mm Applecore Mount	GT-84N1-20M-A

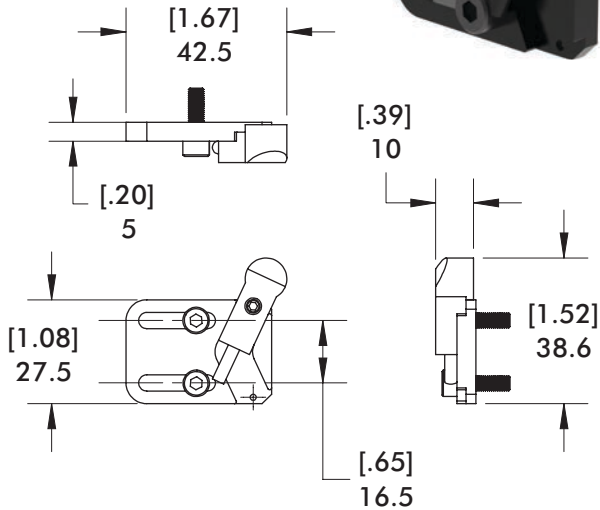
Series 84N1 Sensing Options

Jaw Part Present Sensor or Double Blank Sensor (see kit)



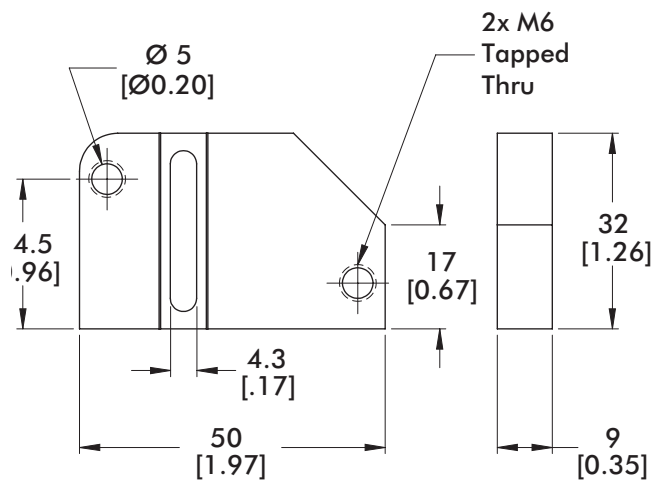
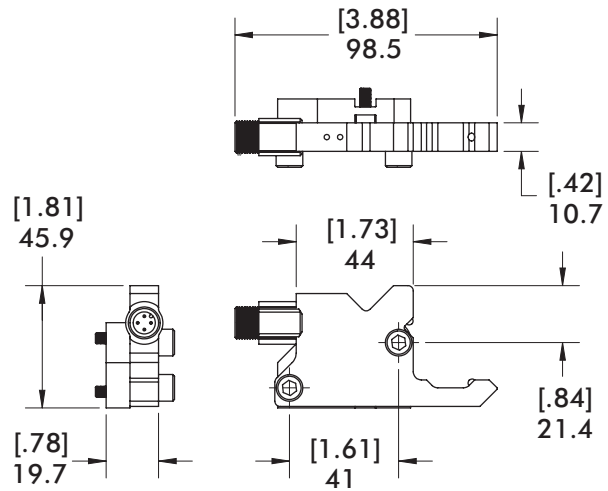
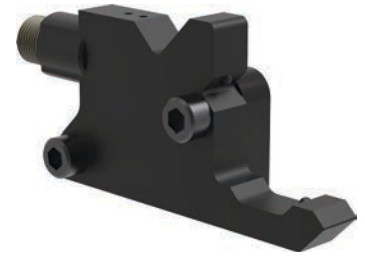
Description	Part Number
PNP Inductive Part Present Sensor Kit	8EA-1024-1
NPN Inductive Part Present Sensor Kit	8EA-1025-1

Double Blank Sensor Kit



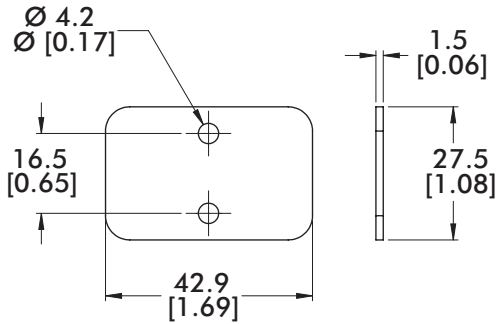
Description	Part Number
PNP Inductive Double Blank Sensor Kit	8EA-1026-1
NPN Inductive Double Blank Sensor Kit	8EA-1029-1

Infrared Part Present Sensor and Mounting Adapter



Description	Part Number
Infrared Part Present Sensor Kit	8EA-1023-1

Sheet Stop Option



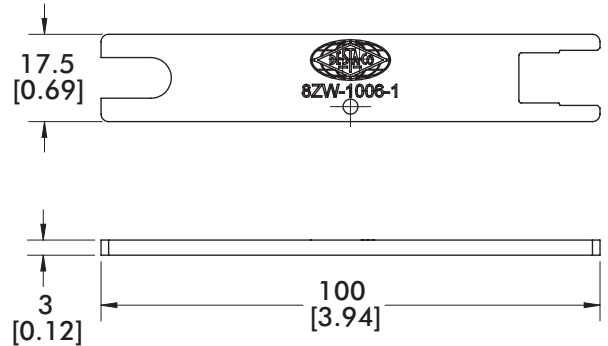
Description

Part Number

Sheet Stop Kit
Includes socket head cap mounting screws

8MH-1003-1

One-Step Easy Tip Adjustment Tool

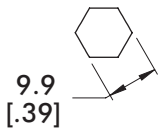
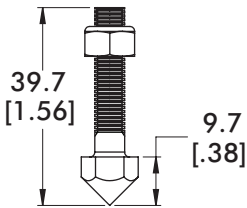


Description

Part Number

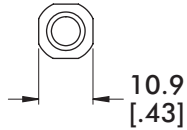
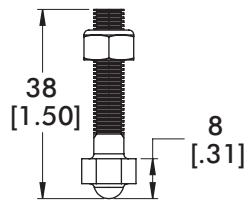
One-Step Quick Tip Adjustment Tool **8ZW-1006-1**

Jaw Tip Options



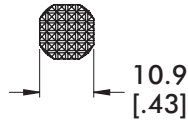
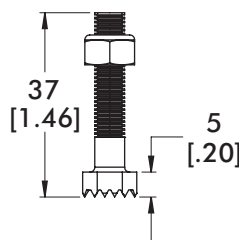
Point Tip

Part Number
8JD-1001-1



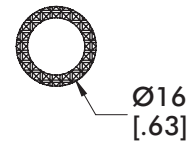
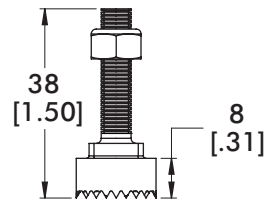
Peen Tip

Part Number
8JD-1003-1



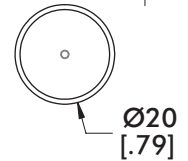
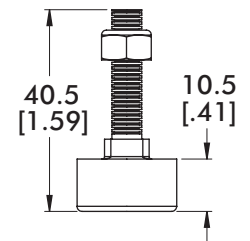
Serrated Tip

Part Number
8JD-1002-1



Serrated Sensor Tip

Part Number
8JD-1004-1



Polyurethane Tip

Part Number
8JD-1005-1



A DOVER COMPANY

GLOBAL LOCATIONS

NORTH AMERICA

DE-STA-CO Headquarters
Auburn Hills, Michigan
Tel: 1.248.836.6700
Toll Free: 1.888.DESTACO
Marketing: marketing@destaco.com
Customer Service: customerservice@destaco.com

Charlevoix, Michigan
Tel: 1.888.DESTACO
Customer Service: customerservice@destaco.com

Wheeling, Illinois
Tel: 1.800.645.5207
Customer Service: camco@destaco.com

Red Wing, Minnesota (Central Research Laboratories)
Tel: 651.385.2142
Customer Service: sales@centres.com

SOUTH AMERICA

Brazil
Tel: 0800-124070
Customer Service: samerica@destaco.com

ASIA

Thailand
Tel: +66-2-326-0812
Customer Service: info@destaco.com

China
Tel: +86-21-2411-2600
Customer Service: china@destaco.com

India
Tel: +91-80-41123421-426
Customer Service: india@destaco.com

EUROPE

Germany
Tel: +49-6171-705-0
Customer Service: europa@destaco.com

France
Tel: +33-1-3996-5000
Customer Service: france@destaco.com

UK
Tel: +44-1902-797980
Customer Service: uk@destaco.com

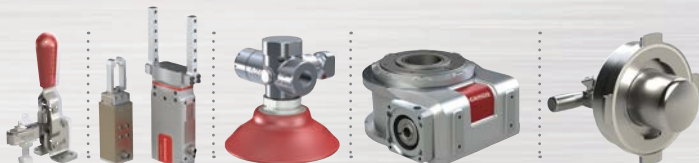
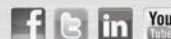
Spain
Tel: +34-936361680
Customer Service: spain@destaco.com

Netherlands
Tel: +31-297285332
Customer Service: benelux@destaco.com



A DOVER COMPANY

1025 Doris Road
Auburn Hills, MI 48326 USA
Tel 1.888.DESTACO
Fax 1.248.836.6901
Email customerservice@destaco.com
destaco.com



© Copyright, 2015 DE-STA-CO. All rights for layout, photos and text rest with the publisher DE-STA-CO. All photomechanical or other reproductions only with our express permission. All sales are based on our terms and conditions of sale, delivery and payment.

DSC_SMG_0715_US_XXK