

# HYDRAULIC CLAMPING TECHNOLOGY

## Hydraulic screw-in cylinder | double acting

### Operating pressure max. 350 bar/min 100 bar

These hydraulic screw-in cylinder are double acting. They can be used in clamping fixtures for positioning, clamping and gripping of workpieces. Such cylinder should be used if rapid and precise stroke speeds are required or when high retraction forces are needed.

### Technical characteristics

- Hydraulic ports at the cylinder bottom
- External thread along the whole housing
- Glide ring seal with high wear resistance
- No stick-slip-effect
- Double piston-rod seal
- An extended piston rod guide assures high stability when transversal forces occur
- Piston rod with internal thread

### CUSTOMER DESIGNED Models

If you need a special cylinder for your application – customer designed Models are available. PLEASE LET US KNOW!

### Recommended accessories (separate Order)

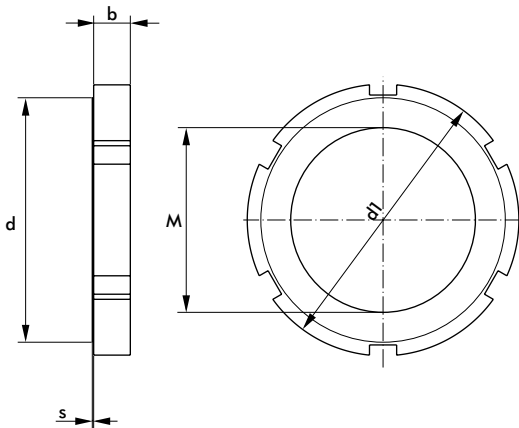
- Groove nut DIN 1804
- 2 x straight screw connection D8S-R1/4



Model no.	Clamping force at 100 bar		Repair kit	Piston Ø [mm]	Stroke* S [mm]	Piston surface area		Oil consumption/ stroke		Connection G	Weight ~ [kg]
	forward stroke [kN]	backstroke [kN]				max. forward [cm <sup>2</sup> ]	back [cm <sup>2</sup> ]	forward [cm <sup>3</sup> ]	back [cm <sup>3</sup> ]		
721D25501-1	4,8	2,8	720V25-0002	25	50	4,90	2,90	24,50	14,50	G1/4	2,5
721D32501-1	7,9	4,8	720V32-0002	32	50	8,04	4,90	40,20	24,50	G1/4	2,90
721D40501-1	12,3	7,5	720V40-0002	40	50	12,56	7,66	62,80	38,30	G1/4	3,50
721D50501-1	19,3	11,4	720V50-0001	50	50	19,63	11,59	98,15	57,95	G1/4	4,50

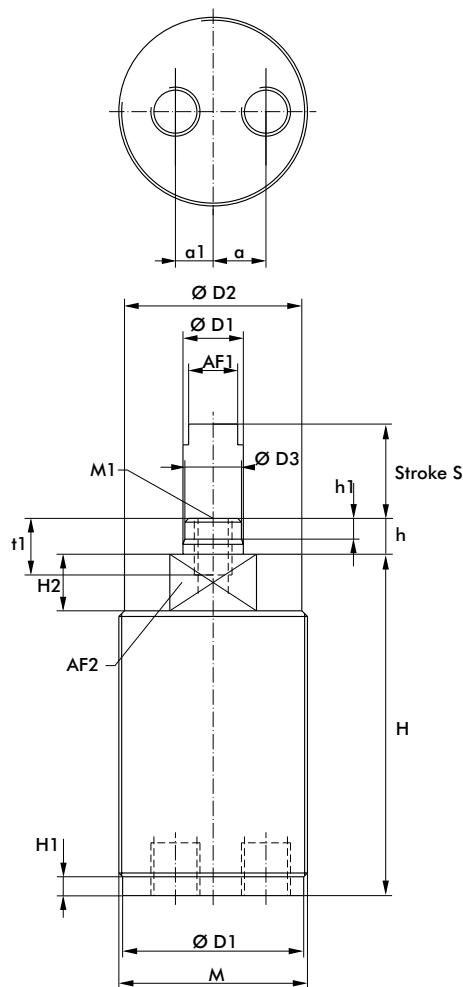
# HYDRAULIC CLAMPING TECHNOLOGY

Hydraulic screw-in cylinder | double acting



Accessories groove nut DIN 1804

Order no. M	b	d [mm]	d1	s
M50x1,5N	13	67	75	0,5
M56x1,5N	13	70	80	0,5
M68x1,5N	14	90	100	0,5
M80x2N	16	105	175	1



Model no.	a	a1	D	D1	D2	D3	H	H1	H2	h	h1	M	M1	AF1	AF2	t
[mm]																
721D25501-1	14	10	48	16	47	15	133,5	5	15	9,5	5,5	M50x1,5	M10	13	41	20
721D32501-1	17	10	54	20	52	19	138	5	15	10	7	M56x1,5	M12	17	46	24
721D40501-1	22,5	5	65	25	64	24	144	5	15	11	8	M68x1,5	M16	21	55	32
721D50501-1	28	-	76	32	76	31	145,5	5	15	12	8	M80x2	M20	27	65	38

# HYDRAULIC CLAMPING TECHNOLOGY

## Hydraulic short stroke cylinder | double acting

### Operating pressure max. 350 bar/min 100 bar

These double action hydraulic short-stroke cylinders are primarily used for operating double action hydraulic punching, notching and cutting units. Furthermore, they can be used as clamping cylinders. The double action version allows rapid stroke speeds. The cylinders are mounted to the hydraulic punching units with the help of mounting flanges. Adequate mounting flanges available on request.

### Technical characteristics

- Optimal piston rod guide; hardened piston rod for protection against corrosion and wear and for better gliding.
- Fine-grinded, polished slide faces for the lip seal and the piston rod improve the service life and the function of the seals.
- Lateral oil ports, additional advance stroke connection on the cylinder base

### CUSTOMER DESIGNED Models

If you need a special cylinder for your application – customer designed Models are available. PLEASE LET US KNOW!

### Included accessories

2 x reducing nipples GWR-3/8-1/4 (only 725D80151-1)

### Recommended accessories (separate Order)

2 x straight screw connectors D8S-R1/4

Mounting flange

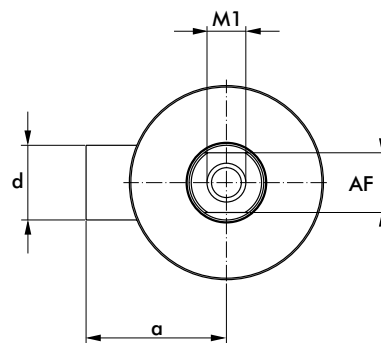
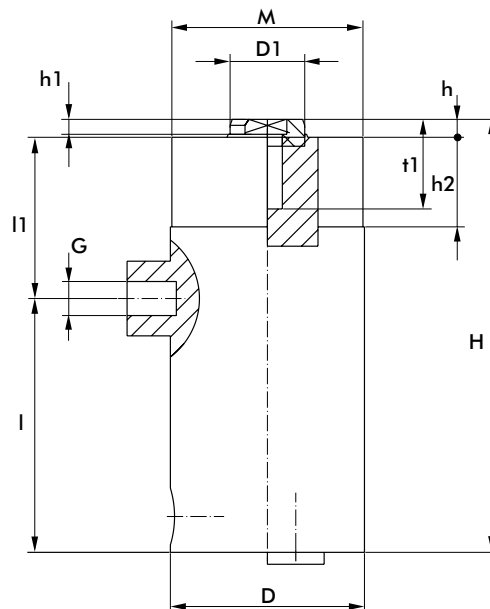
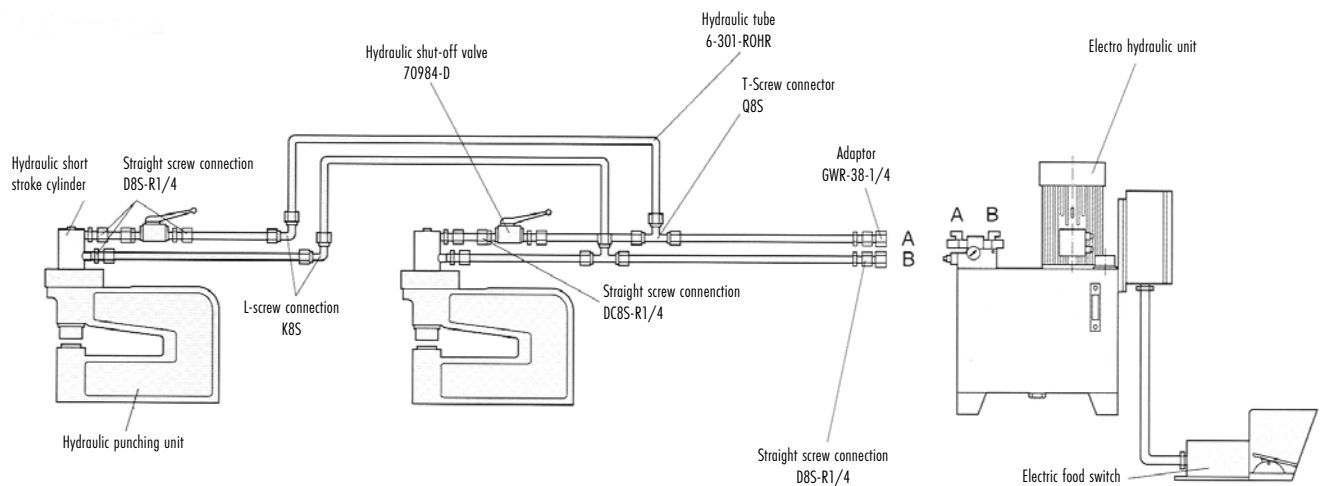
Grooved or hexagonal nut (see page 20 and 24)



Model no.	Clamping force at 100 bar		Repair kit	Piston Ø [mm]	Stroke* S [mm]	Piston surface area		Oil consumption/ stroke		Connection G 2x	Weight ~ [kg]
	forward stroke	back stroke				forward stroke	back stroke	forward stroke	back stroke		
	[kN]	[kN]				[cm <sup>2</sup> ]	[cm <sup>2</sup> ]	[cm <sup>3</sup> ]	[cm <sup>3</sup> ]		
725D35151-2	9,6	6,5	720V35-0001	35	15	9,62	6,47	14,40	9,70	G1/4	1,9
725D50151-2	19,6	14,7	720V50-0005-2	50	15	19,63	14,72	29,50	22,10	G1/4	3,0
725D63171-1	31,2	22,7	720V63-0001	63	17	31,17	23,13	53,00	39,30	G1/4	4,5
725D80151-1	50,3	37,7	720V80-0001	80	15	50,26	37,69	75,40	56,60	G3/8	10,0

# HYDRAULIC CLAMPING TECHNOLOGY

## Hydraulic short stroke cylinder | double acting



Model no.	a	d	D	D1	h	hi	h2	H	l	l1	M	M1	AF	t1
	[mm]													
725D35151-2	40	25	50	20	9	7	30	159	88	52	M48x1,5	M10	17	25
725D50151-2	-	-	84	25	9	7	30	137	90	47	M64x1,5	M12	20	25
725D63171-1	-	-	97	32	9	7	32	150	96	45	M80x2	M16	27	30
725D80151-1	65	28	105	40	9	7	29,5	183,5	105	72,5	M80x2	M16	36	31